



2019-2020 Final Budget

Jason Perrin, D.Ed.
June 17, 2019

REVENUE PROJECTIONS 19-20

Total Revenue Increase (Projected)= 3.3%

Local Revenue Increase Projected as: 3.4%

*Assumes Local Tax Collection Rate= 95.3%
This was increased from 95.1% based on Data
(Effort to better predict Local Revenues)

State Revenue Projected as: 3.3%

Federal Revenue Projected as: 3.5%

REVENUES AT A GLANCE

Revenue Type	Percent of Total
Local	68%
State	30%
Federal	2%

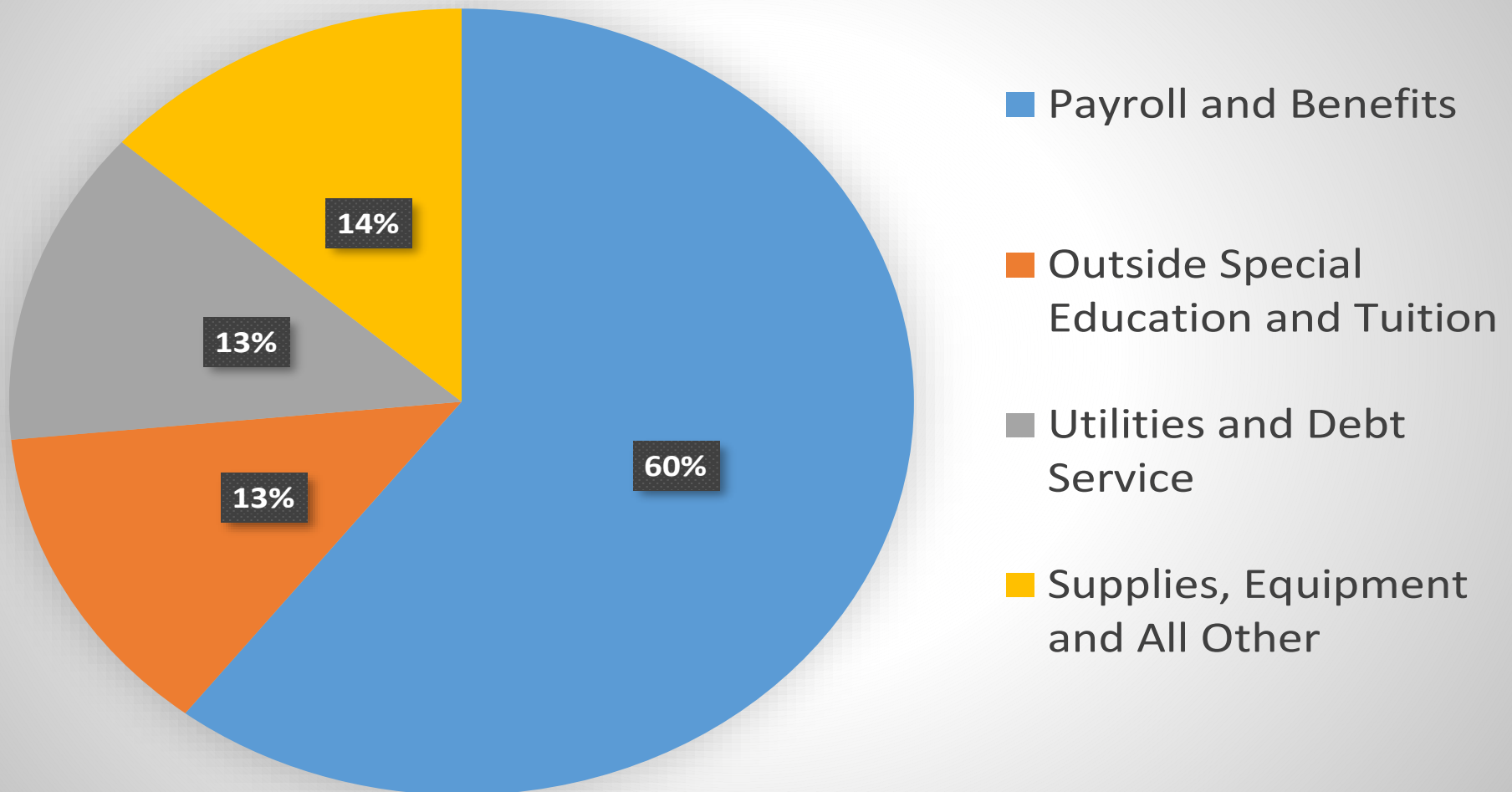
EXPENDITURE PROJECTIONS 19-20

Total Expenditure Increase= **3.6%**

- Assumes Increased Expenditures for Contracts and Agreements
 - Assumes other increases from previous slides
- Assumes continued support of Five-Year Technology Plan
 - Assumes \$1,445,460 to support Capital Projects per the District's 5 Year Plan
- Provides for \$219,825 for Special Budget Requests (SBR's)

EXPENDITURES AT A GLANCE

2019-20 Expenses



UNASSIGNED FUND BALANCE 19-20

Unassigned Fund Balance (UFB)

\$12,903,807-Recent Audit

\$3.4 Million Utilized to Balance 18-19 Final Budget

Projected Balance June 2019= \$9,065,216

Projected Balance June 2020=\$5,386,276
(7.978%)

Meets Board Policy of
6%-8% of next year's (19/20) expenditures

SPECIAL BUDGET REQUESTS: 19-20

Request	Organizational Level	Estimated Cost (Net \$)
Social Worker 1.0 FTE	District Wide	\$87,167
Music Position 1.0 FTE	Middle School	\$83,721
Lacrosse Program	Athletics	\$48,937
	Total Requests=	\$219,825

PROPOSED BUDGET: 19-20

Recommendation: Tax Increase of 1.00%

The Recommendation is based on

Effort to Reduce Structural Deficit (not met)

Ongoing Effort to Better Predict Revenues and Expenditures

Remaining Fund Balance Within Policy Limit

Five Year Technology Plan Implementation: Instruction and Achievement

Ability to Fund Special Budget Requests: Student Experiences, Supports for Learning

Assumes \$1,445,460 to support Capital Projects (5 Yr Plan)

Reserve Accounts Remaining Stable Enough to Mitigate Possible Increased Expenditures in Future Years

EXAMPLE TAX IMPACTS

Gettysburg Area School District
2019-20 Tax Millage Impact - Recommended Final Budget
June 12, 2019

This chart schedules the annual tax impact for various levels of tax increases and assessed values of real estate.

Market & Assessed Value	Millage Increase (Note: The 2018-2019 Real Estate Tax Rate is 10.9097 mills)					
				Act 1 Index - GASD	(1)	(2)
	1.00%	1.18%	2.00%	2.30%	2.70%	3.20%
	0.1090	0.1287	0.2181	0.2509	0.2945	0.3491
\$50,000	\$5.45	\$6.44	\$10.91	\$12.55	\$14.73	\$17.46
100,000	10.90	12.87	21.81	25.09	29.45	34.91
150,000	16.35	19.31	32.72	37.64	44.18	52.37
200,000	21.80	25.74	43.62	50.18	58.90	69.82
250,000	27.25	32.18	54.53	62.73	73.63	87.28
256,093 *	27.91	32.96	55.85	64.25	75.42	89.40
300,000	32.70	38.61	65.43	75.27	88.35	104.73
350,000	38.15	45.05	76.34	87.82	103.08	122.19
400,000	43.60	51.48	87.24	100.36	117.80	139.64
450,000	49.05	57.92	98.15	112.91	132.53	157.10
500,000	54.50	64.35	109.05	125.45	147.25	174.55

* This is the current average assessed real estate value district-wide.

To calculate the maximum annual impact for yourself:

	Assessed Value of Real Estate	x	Rates - Using 1.00% Increase	/ 1,000 =	Amount
Example - Increase:	\$ 256,093	x	0.1090	/ 1,000 =	\$27.91
Example - Total Tax:	\$ 256,093	x	11.0187	/ 1,000 =	\$2,821.81
Your Increase:	\$ _____	x	0.1090	/ 1,000 =	\$ _____
Your Total Tax:	\$ _____	x	11.0187	/ 1,000 =	\$ _____

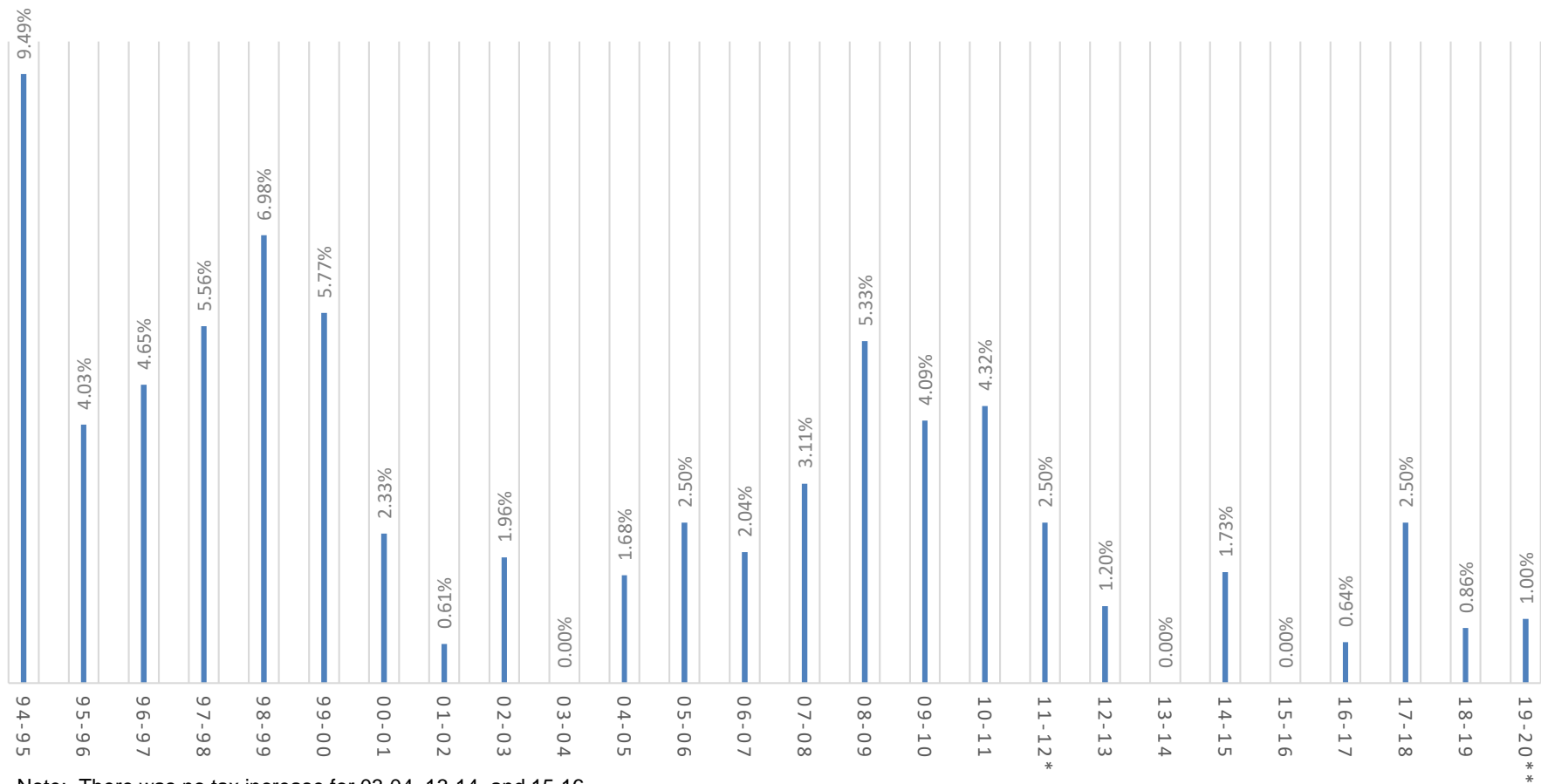
Note: For approved Homestead properties, the tax reduction due to gaming (slots) funds for 2019/20 is projected to be about \$167.35. The final approved amount will show as a reduction to your 2019/20 tax bill.

(1) - Lowest adjusted Act 1 index of all the other school districts in Adams County

(2) - Highest adjusted Act 1 index of all the school districts in Adams County

TAX HISTORY: GASD

GASD REAL ESTATE TAXES PERCENT INCREASE BY YEAR



Note: There was no tax increase for 03-04, 13-14, and 15-16.

* - County-wide reassessment year.

** - 19-20 Recommended Final Budget

NEXT STEPS 19-20

June 17 Board Meeting:

Recommend and Adopt a Final Budget for 19/20